

TroubleShooting for CCR1036/CCR1016

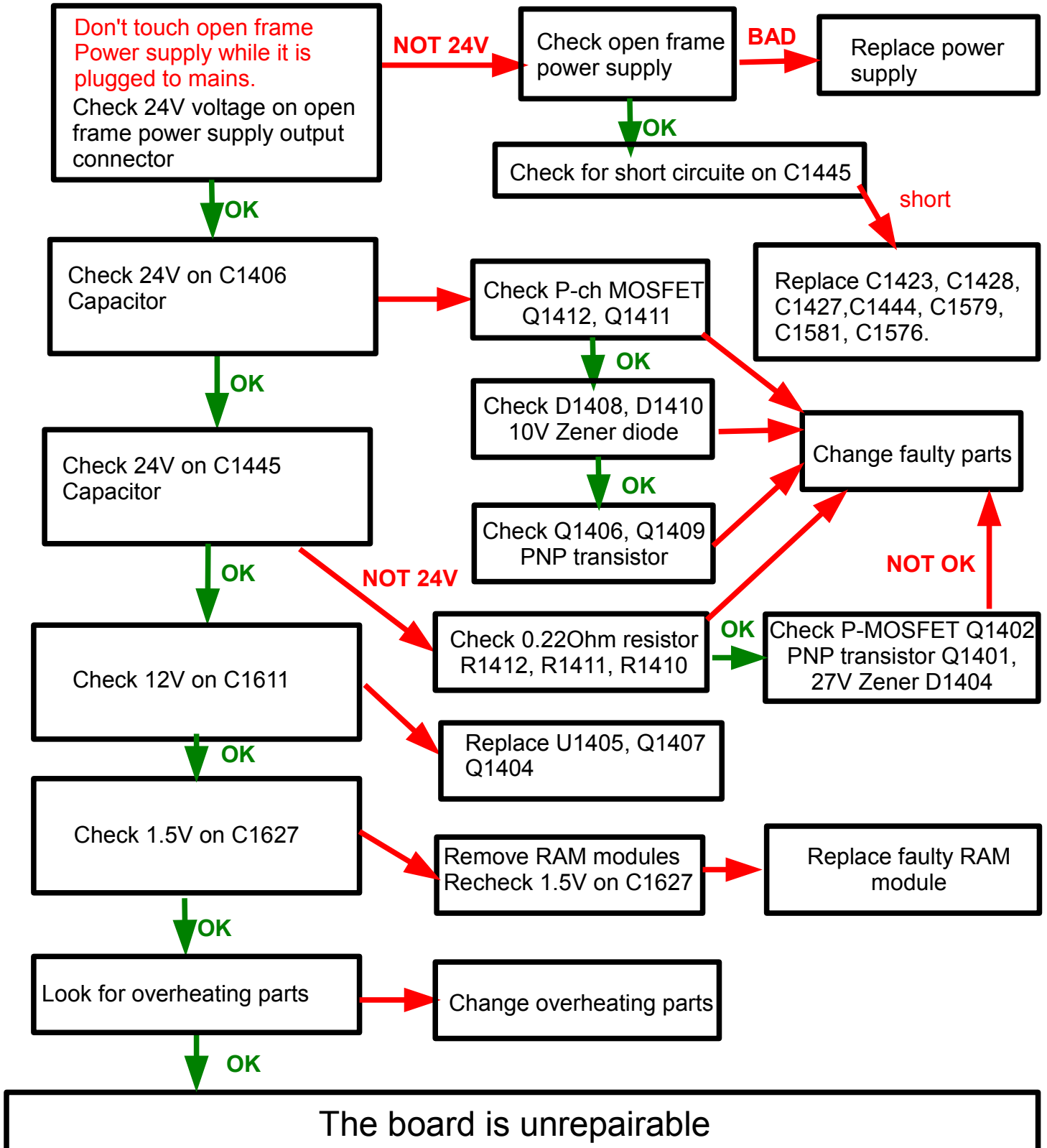
These repair instructions are for **NON WARRANTY** repairs only!

CCR1036-8G-2S+
CCR1036-8G-2S+EM
CCR1036-12G-4S
CCR1036-12G-4S-EM
CCR1016-12G
CCR1016-12G-BU

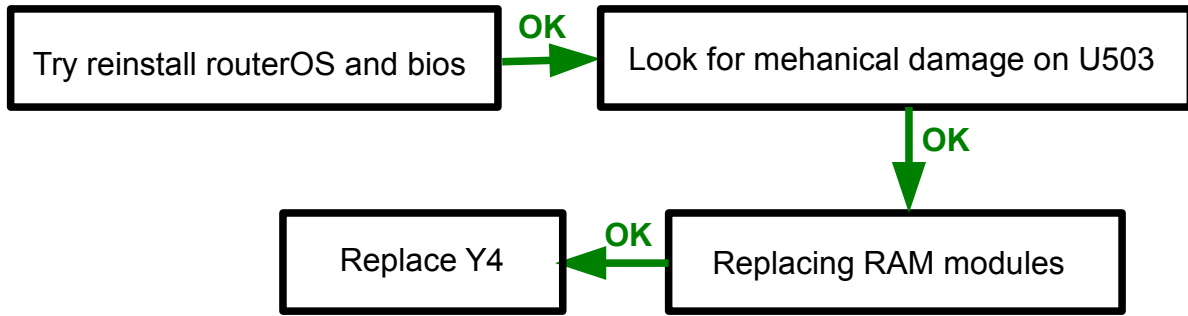
Try reinstalling routerOS and bios before this repair procedure.

Please make visual inspection for signs of corrosion or mechanical damages before starting.

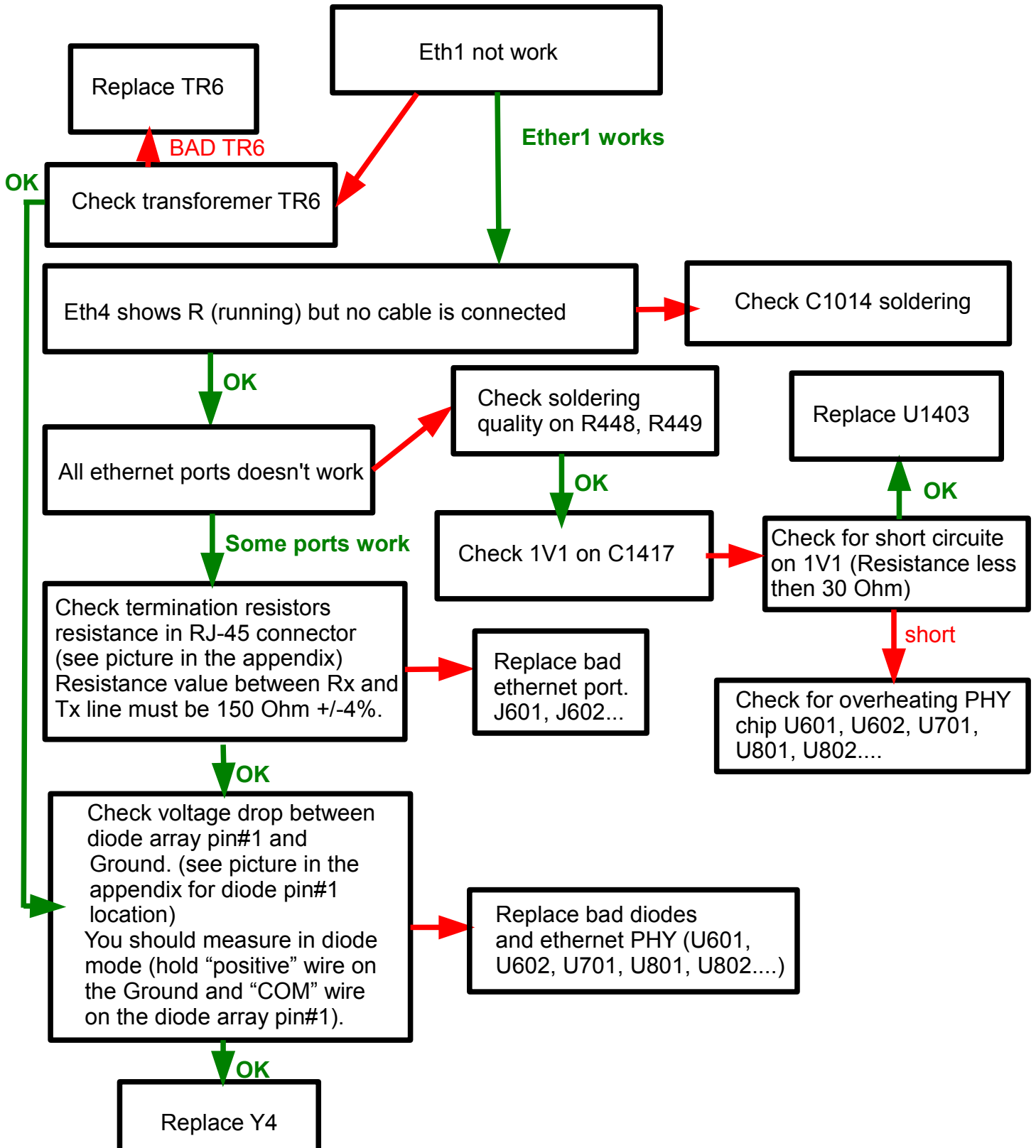
Blue LED isn't lit



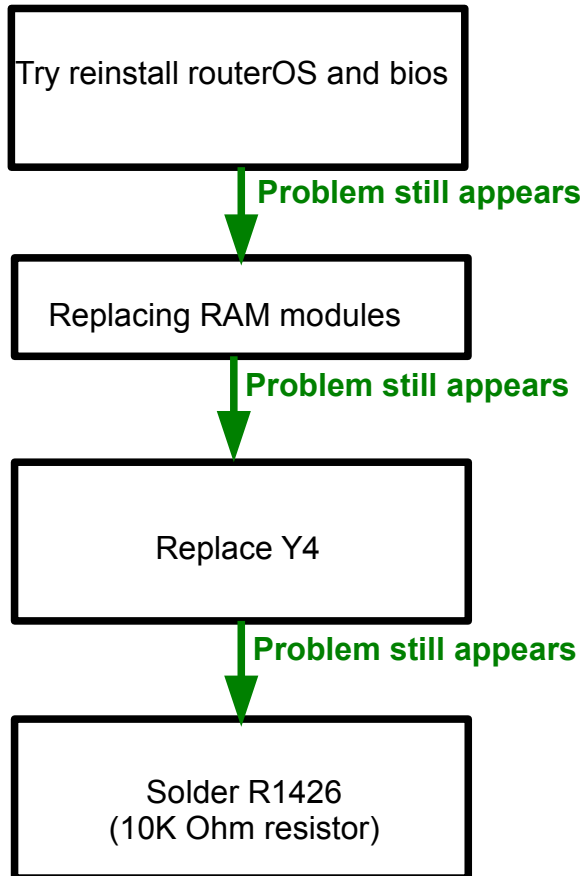
Blue led lit, board doesn't boot.



One or more ethernet port does not work



Stability issue (restarts, hangs)



Fan not working

Check PNP transistor Q133

Reference number	Part Number	Description
ADAPT1	WT2400400-R2	Open frame power adapter 24V 4A
U503	RT9818C-29GVL	Voltage detector SOT23-3
Y4	DSC1001BE2-125.0000T	125Mhz Crystal oscillator
C1423, C1428, C1427, C1444, C1579, C1581, C1576.	UMK316F225ZG-T	2.2uF 50V 1206
Q1412, Q1411	AO4421	MOSFET P-Ch
D1408, D1410	BZX84C22	22V Zener SOT23
R1412, R1411, R1410	CR32-R220-JL	Resistor 0.22R % 1206 1/4W
Q1402	AO4421	MOSFET P-Ch
Q1401	BC856B	PNP transistor
D1404	BZX84C6V8	Zener diode 6.8V SOT23
U1405	RT8110BGJ8	Buck controller
Q1407 Q1404	AP4430GM	MOSFET N-Ch
TR6	APL-076	Single ethernet transformer
J601, J602...	SRJ-06BGGYNL-A(TIN)	Ethernet ports
R448, R449	RC0502FR-072KL	270 Ohm 1% 0402 Resistor
C1014	C0402B105K007T	1uF 6.3V 0403 X5R
U1403	RT8058GQW	Step-Down DC/DC Converter
U601, U602, U701, U801, U802....	AR8033	Ethernet PHY
Q133	KTA1663	PNP transistor
R1426	RC0402FR-0710KL	Resistor 10K 1% 0402

When you order components for repairing boards from our sales, please, write components reference number not a part number

